

# E/SILICONE SHEET

## PRODUCT DATA SHEET



Used In Substation Distribution Transmission

**MEETS IEEE 1656 STANDARD**

**APPROVED FOR RURAL UTILITIES SERVICE**

### Product Description

E/Silicone Sheet is a roll of reinforced silicone stock that can be cut to create custom fit covers to prevent phase-to-phase and phase-to-ground wildlife contact.

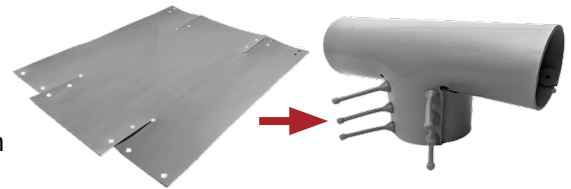


### Features

- Extremely durable. Will not chalk, brittle, crack, or craze through extreme temperatures.
- Low aging. Resistant to UV, salt, weather, corona and ozone. 18 year field test reports available.
- Hydrophobic surface. Self-cleaning during rainstorms to reduce contamination.
- Self-extinguishing, non-tracking and arc resistant. Will not melt or spread flames.
- Reusable and flexible. Installs easily and can be modified to eliminate gaps.

### Application

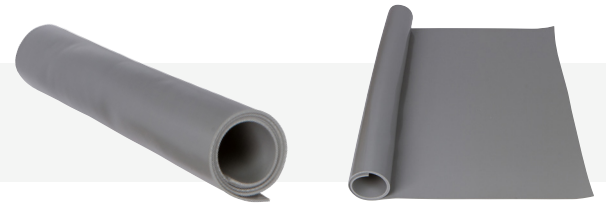
Install on unique equipment using scissors to cut sheets into desired shape, an E/Hole Punch tool to create holes to accept pins, and secure the custom cover with E/Push Pins.



### Product Selection

#### E/Silicone Sheet | 25kV

Cuttable silicone sheets for use on complex energized equipment. Can be cut to shape and size. Finished cover provides **25kV** phase-to-ground protection.



Part #	Drawing #	Thickness	Width	Length	Color	Material
E/SS-24	330-00-01	0.10 in (2.54 mm)	24 in (609.60 mm)	120 in (3.05 m)	Gray	Silicone reinforced with polyester
E/SS-30	330-00-02	0.10 in (2.54 mm)	30 in (762.00 mm)	120 in (3.05 m)	Gray	Silicone reinforced with polyester

#### E/Silicone Push Pins

Silicone pins that can be pushed into holes to fasten silicone covers.



Part #	Drawing #	Length	Color	Material	Bag Qty
E/Silicone Push Pins Single Wall, Gray	147-00-01G	2.50 in (63.50 mm)	Gray	Silicone	50

#### E/Hole Punch

For use with all silicone based E/Products including E/Silicone Sheet. Can punch through up to 2 layers of reinforced silicone. Use tool to punch holes in silicone covers or sheets to add drainage holes or fastening points.



Part #	Drawing #	Length	Punch Diameter	Material(s)
E/Hole Punch	301-10-01	11.00 in (279.40 mm)	0.31 in (7.90 mm)	Steel and Aluminum

*Midsun Group warrants that the product(s) represented within conform(s) to its chemical and physical description and is appropriate for the use specifically as stated on the respective technical data sheet when used in compliance with Midsun Group written instructions. The user is obligated to determine the suitability of the products for its intended use or fitness for a particular purpose and assumes all risks and liabilities in connection with the use of the product(s). Midsun Group makes no other warranty, of merchantability or fitness of purpose either expressed or implied. Midsun Group disclaims any and all liability for any damages resulting from the use of the product(s) not in accordance with the instructions provided by Midsun Group. All information contained in the respective technical data sheet(s) should be used as a guide only and is subject to change without notice. This document supersedes all previous revisions.*